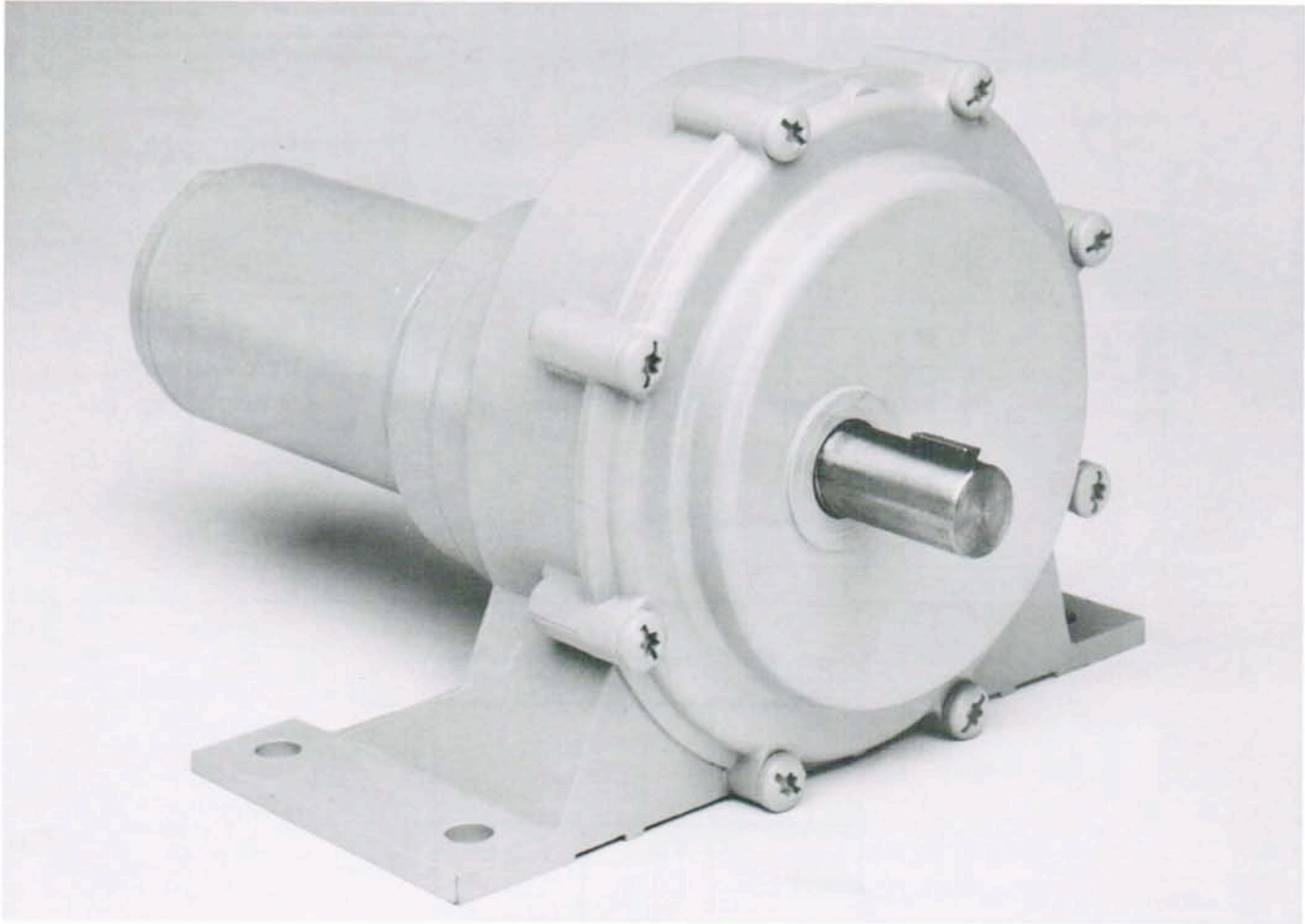




Model K100
Gearmotor
2 1/2" PMDC

LOW SPEED/HIGH TORQUE



Specifications:

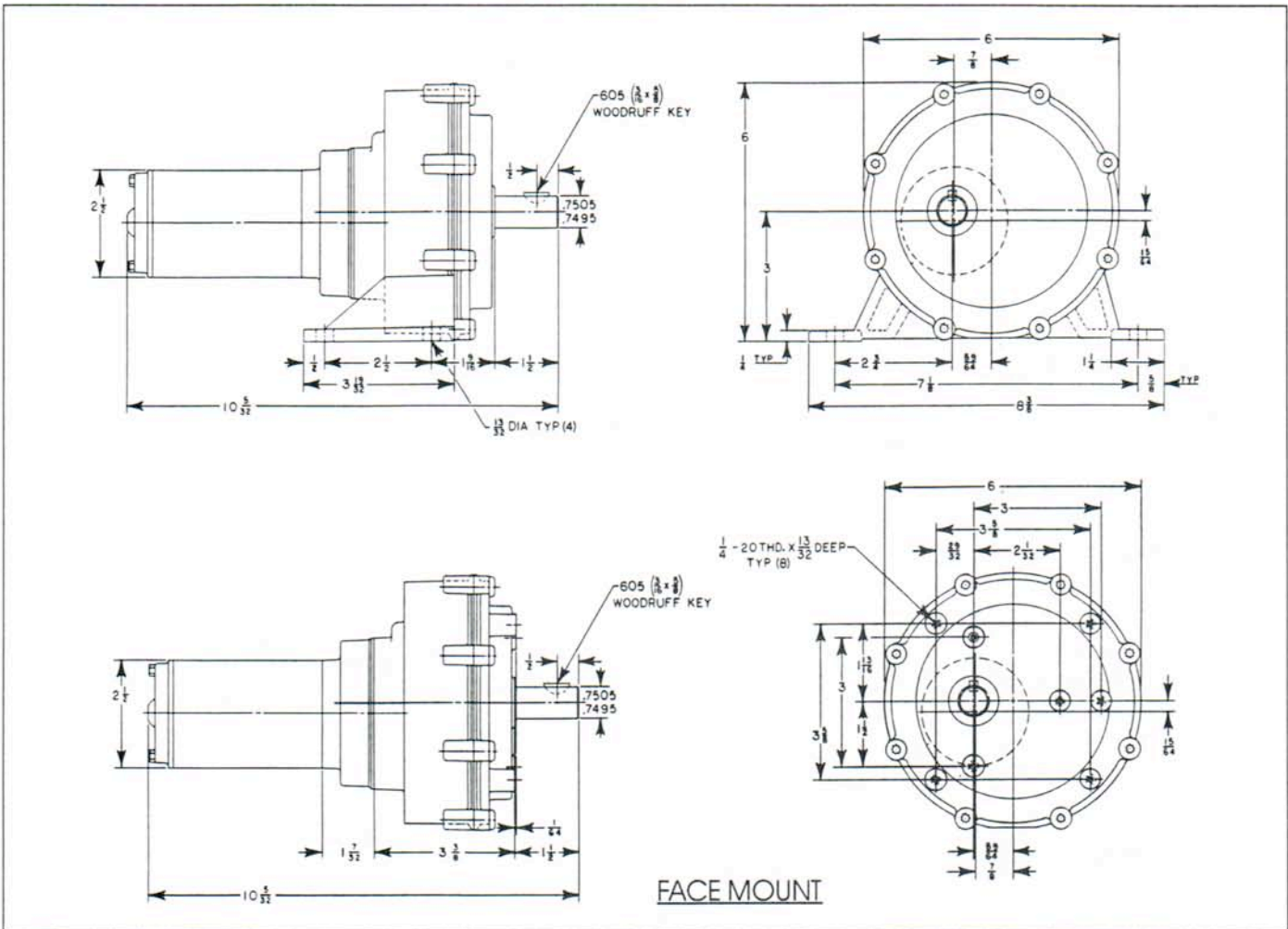
- 1/30 H.P. permanent magnet motor
- 12 & 90 VDC
- Precision helical gears in first reduction
- Eight standard ratios: 529:1 thru 69081:1
- Zinc diecast housing
- Oil impregnated bronze bearings on gear shafts
- O-Ring seal on output shaft
- Permanently lubricated
- All position mount

Options:

- Needle bearings
- Face mount with feet
- Face mount (no feet)
- External brush
- For other options call factory

Note: Painted finish is not standard

Model K100 2 1/2" PMDC Motor



Torque Chart (Inch Lbs)

PM MOTOR 1/30 HP		
RATIO	FULL LOAD RPM	FULL LOAD TORQUE
529:1	6.2	220
1554:1	2.1	600
3939:1	.84	1200
11571:1	.29	1200
30186:1	.11	1200
69081:1	.05	1200

Overhung load capacity (1" from output boss) = $\frac{13000}{\text{RPM}}$, not to exceed 300 lbs.

KMG

KLAUBER MACHINE & GEAR CO.
 1101 GEARTECH PARKWAY
 PACIFIC, MO 63069
 (636) 257-3002 FAX: (636) 257-3005