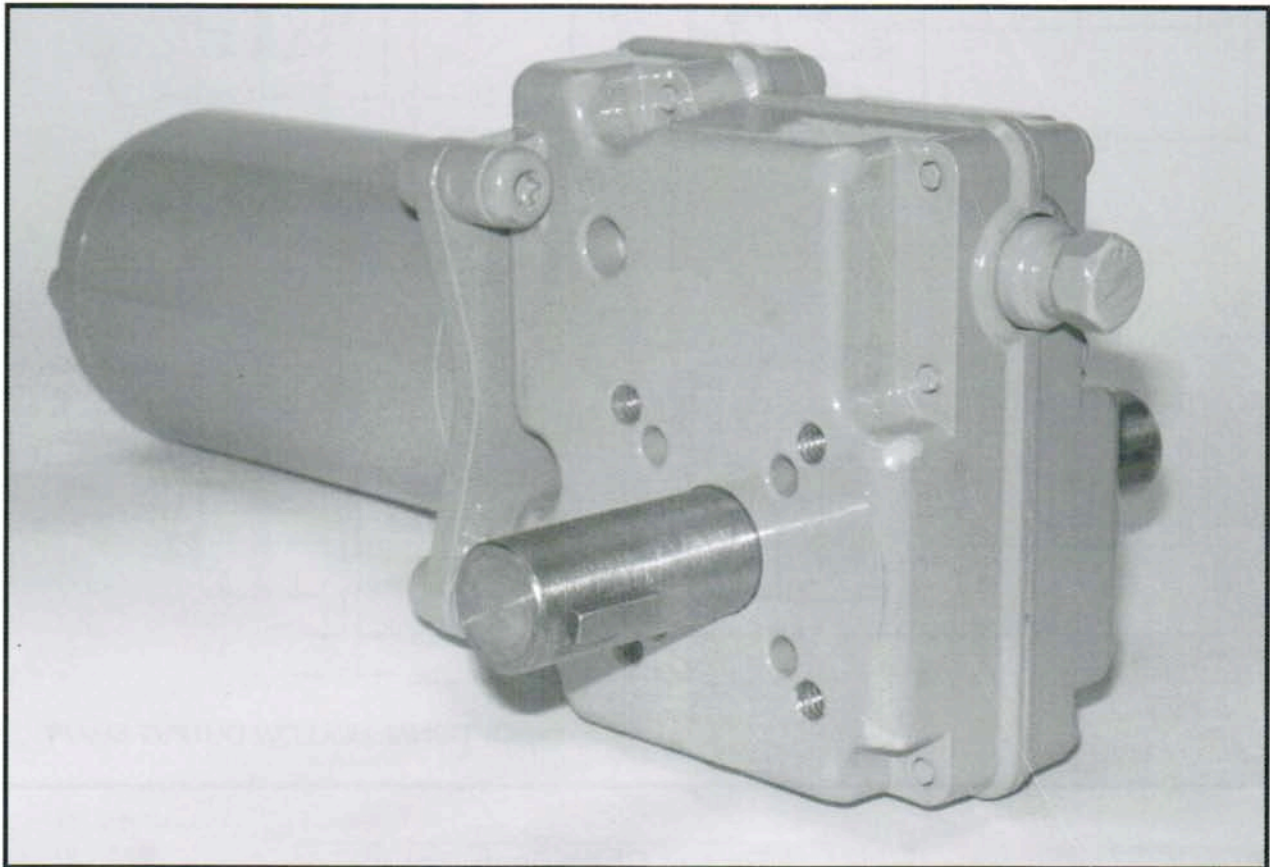




**Model K150  
Gearmotor  
2.5 & 3.3 PMDC MOTOR**



**Specifications:**

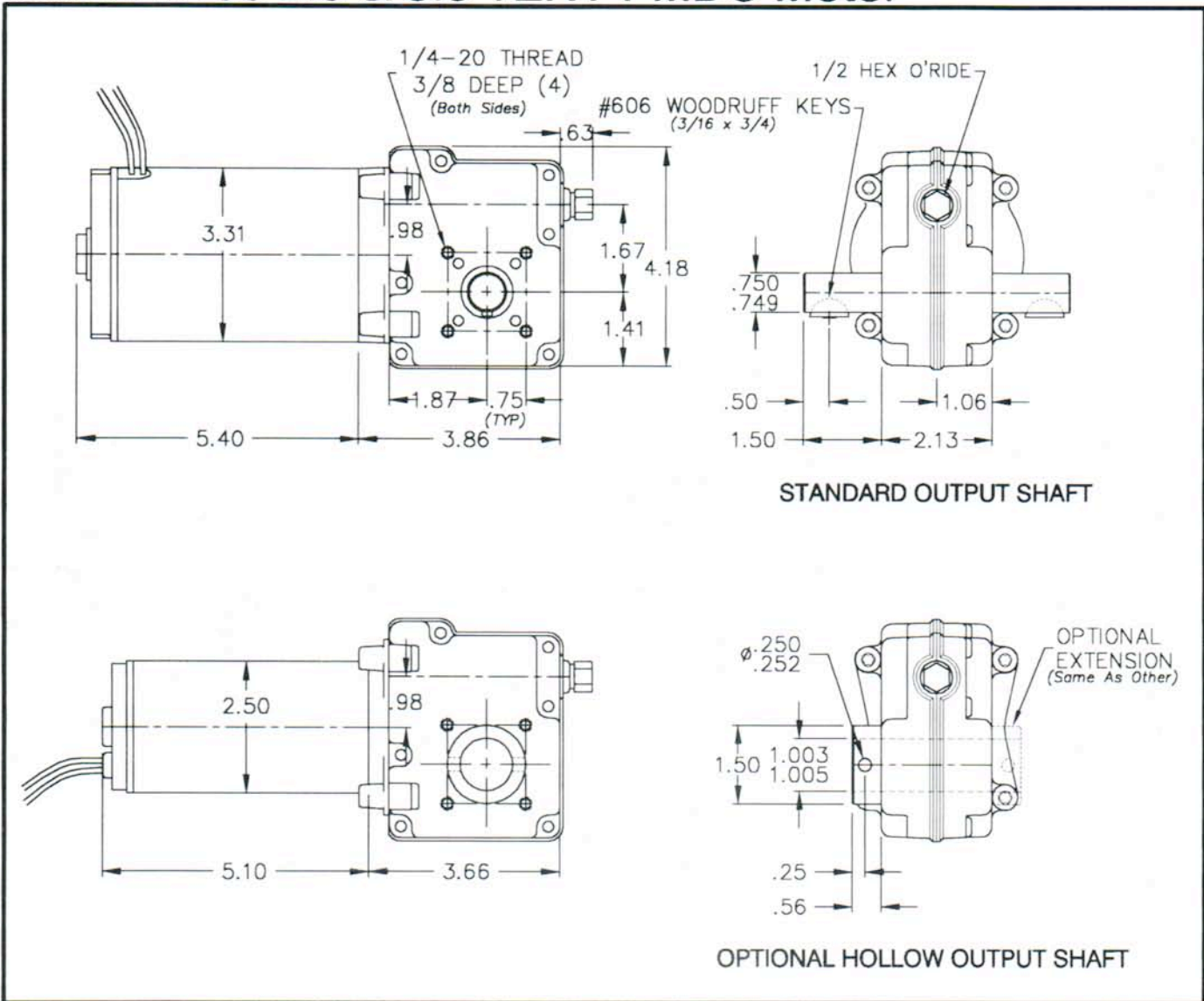
- 1/10–1/6 HP Ball Bearing Motors
- 12 VDC Input
- Intermittent Duty
- Reversible
- Ten Standard Ratios
- Zinc Diecast Housing
- Steel and Bronze Precision Gears
- Needle and Sleeve Bearings On Gear Shafts
- O-Ring Seal On Output Shaft
- Permanently Lubricated
- All Position Mount (Face—both sides)

Note: Painted finish is not standard.

**Options:**

- 24 and 90 VDC Input
- Ball Bearings on Output Shaft
- Lip Seal on Output Shaft
- Single Extended Output Shaft
- Hollow Output Shaft
- For other options call factory

# Model K150 2.5 & 3.3 TENV PMDC Motor



## Torque Chart (inch lbs)

PERMANENT MAGNET DC MOTOR

RATIO	3.3" 1/6 HP 2700 RPM		3.3" 1/6 HP 1900 RPM		RATIO	2.5" 1/10 HP 1800 RPM	
	FULL LOAD		FULL LOAD			FULL LOAD	
	RPM	TORQUE	RPM	TORQUE		RPM	TORQUE
*40:1	66	60	50	85	*46:1	40	60
*79:1	34	100	25	150	*91:1	20	100
159:1	17	180	13	260	182:1	10	180
187:1	14	210	11	290	215:1	8	210
215:1	12	210	9	290	247:1	7	210

\*Prone to Backdrive

(Output Torque is Calculated Average and Gear Limited)

Overhung load (1" from output boss) not to exceed 200 lbs.



**KLAUBER MACHINE & GEAR COMPANY**

1101 GEARTECH PARKWAY  
PACIFIC, MO. 63069

PH: (636) 257-3002 FAX: (636) 257-3005