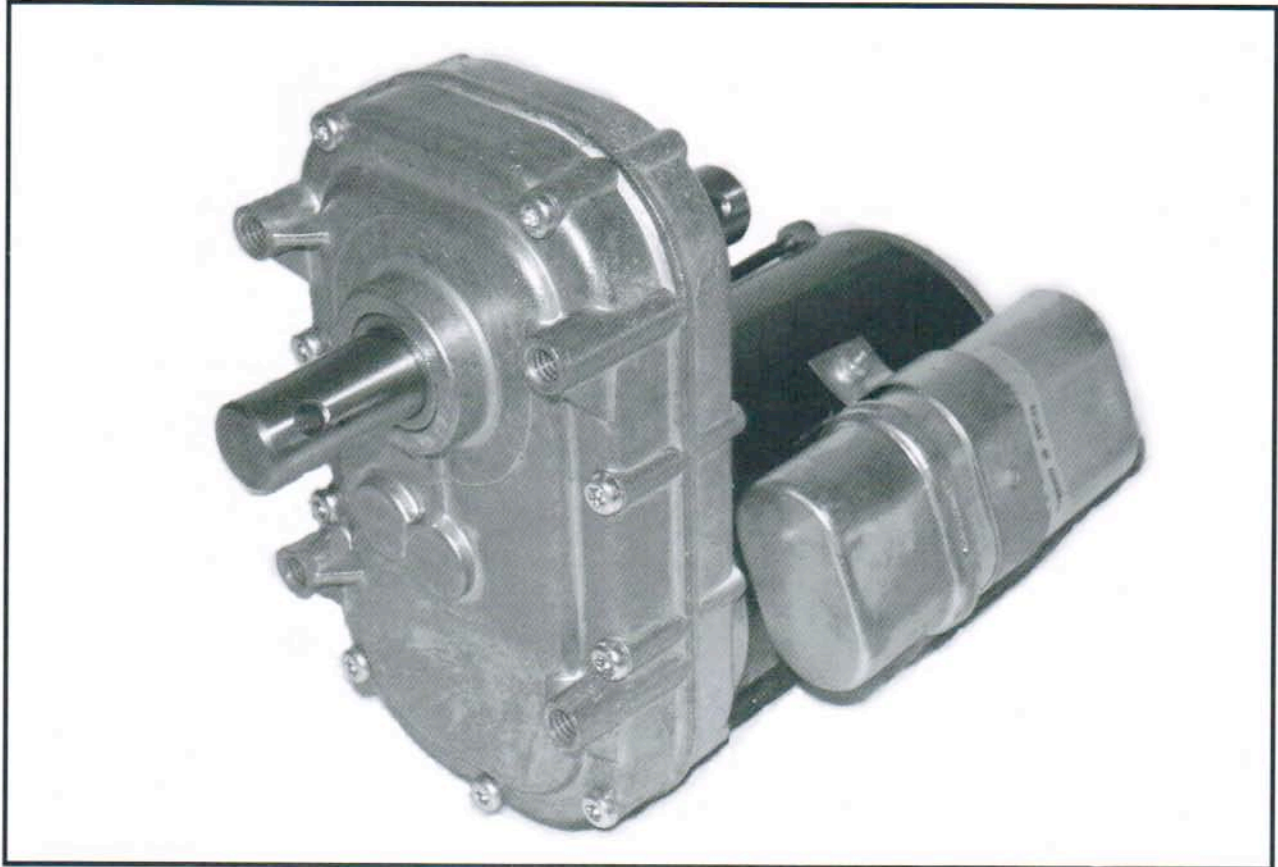


Model K350 Gearmotor 3.3" PSC Motor



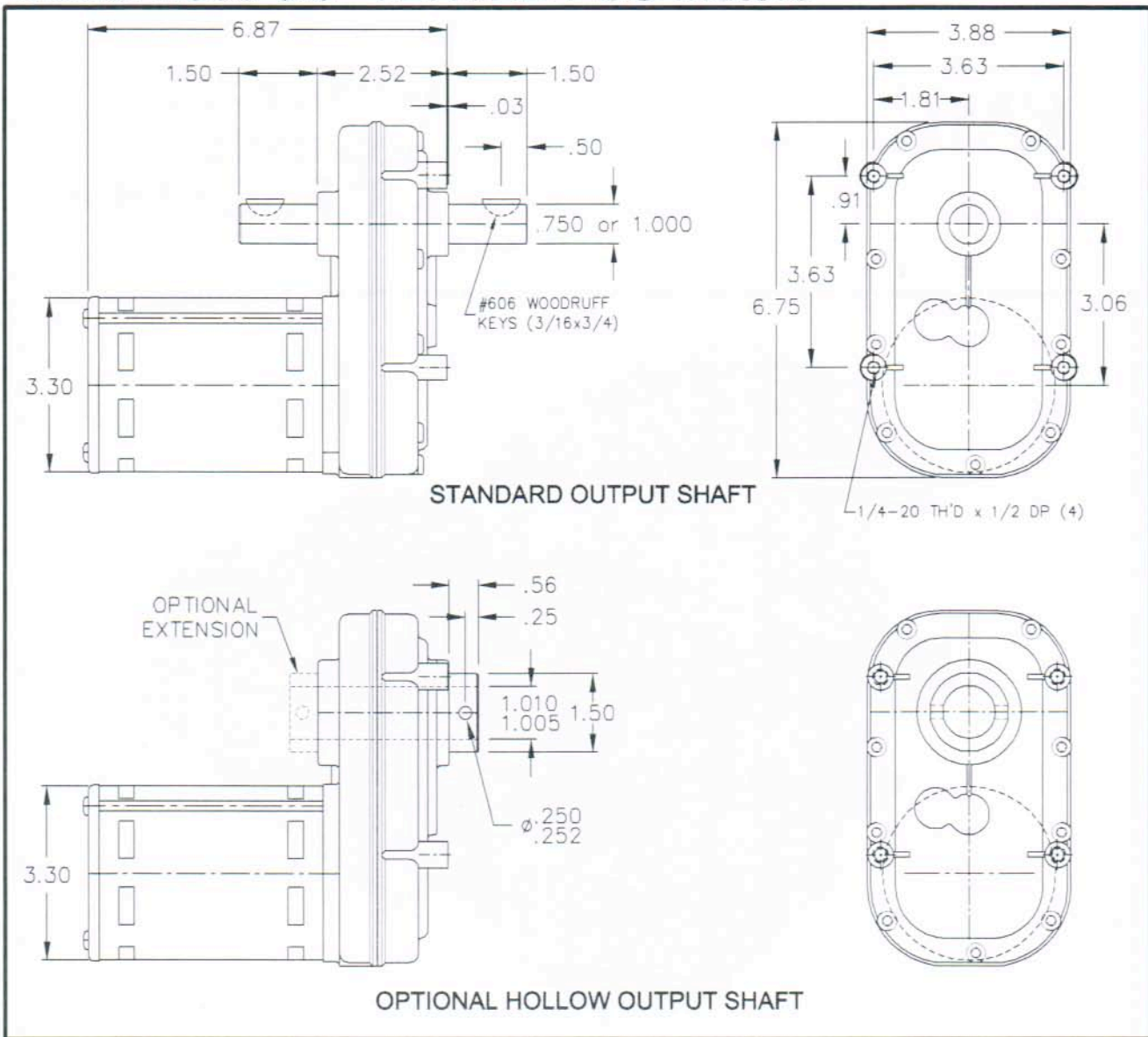
Specifications:

- 1/10 hp 3.3" Permanent Split Capacitor motor
- 115/60 VAC input
- Open continuous duty motor
- Auto-reset thermal protection
- Ball bearings in motor
- Reversible rotation
- Zinc die-cast housing
- Seven standard gear ratios
- Precision helical gears in first reduction
- Needle bearings on gear shafts
- O-ring seal on output shaft
- Permanently lubricated
- All position mount

Options:

- 230 VAC 50/60 Hz input
- Dual 115/230 VAC input
- Single extended output shaft
- Brake mounted on motor
- Consult factory for other options

Model K350 3.3" VENTED PSC Motors



Torque Chart (inch lbs)		
1/10 HP 115 VAC /60 HZ 4-POLE PERMANENT SPLIT CAP.		
RATIO	FULL LOAD RPM	FULL LOAD TORQUE
39:1	40	125
142:1	11	420
255:1	6	675
358:1	4	800
649:1	2.4	800
920:1	1.7	800
1779:1	0.9	800

Overhung load capacity (.75" from output boss) not to exceed 300 lbs.



KLAUBER MACHINE & GEAR COMPANY
 1101 GEARTECH PARKWAY
 PACIFIC, MO. 63069
 PH: (636) 257-3002 FAX: (636) 257-3005
www.klaubergear.com