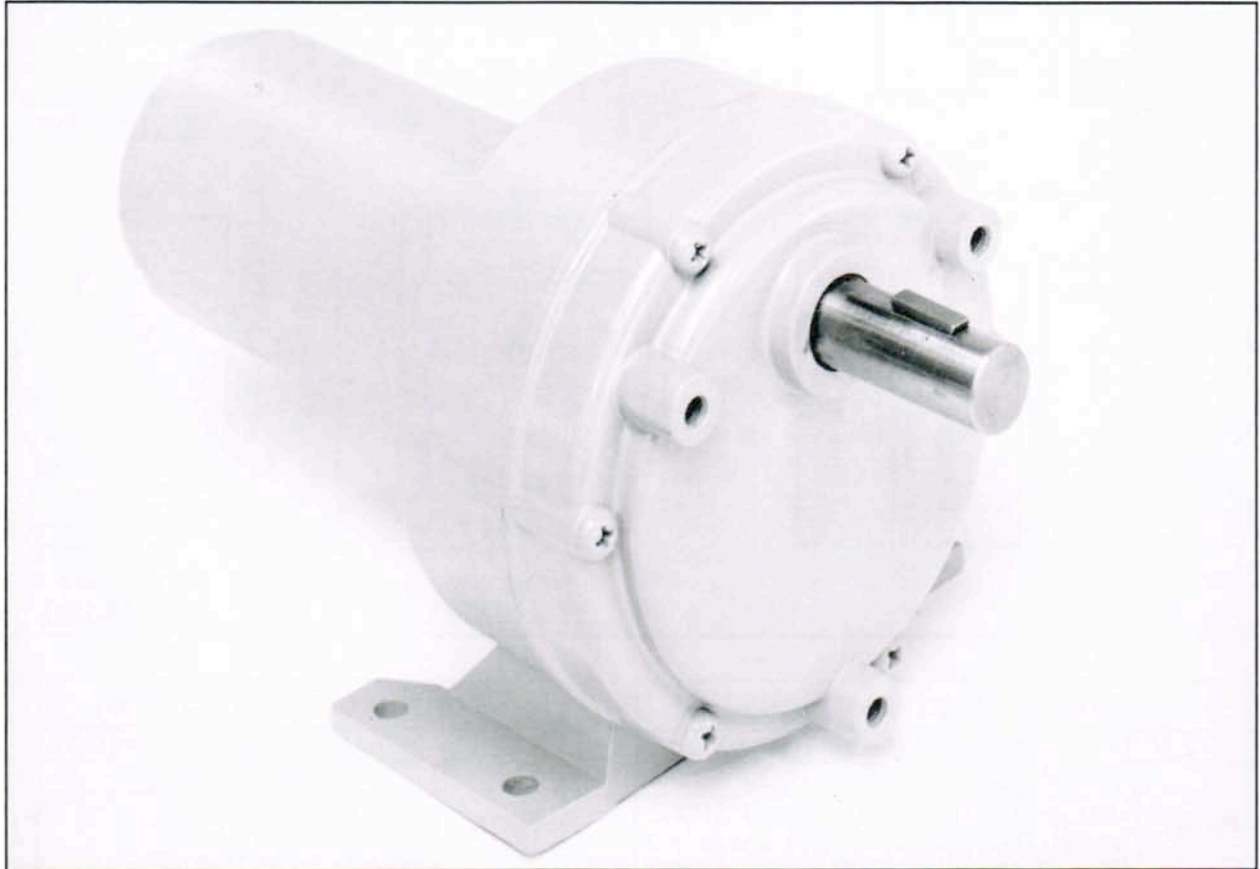




Model K400 Gearmotor 2.5 & 3.3 PMDC MOTOR



Specifications:

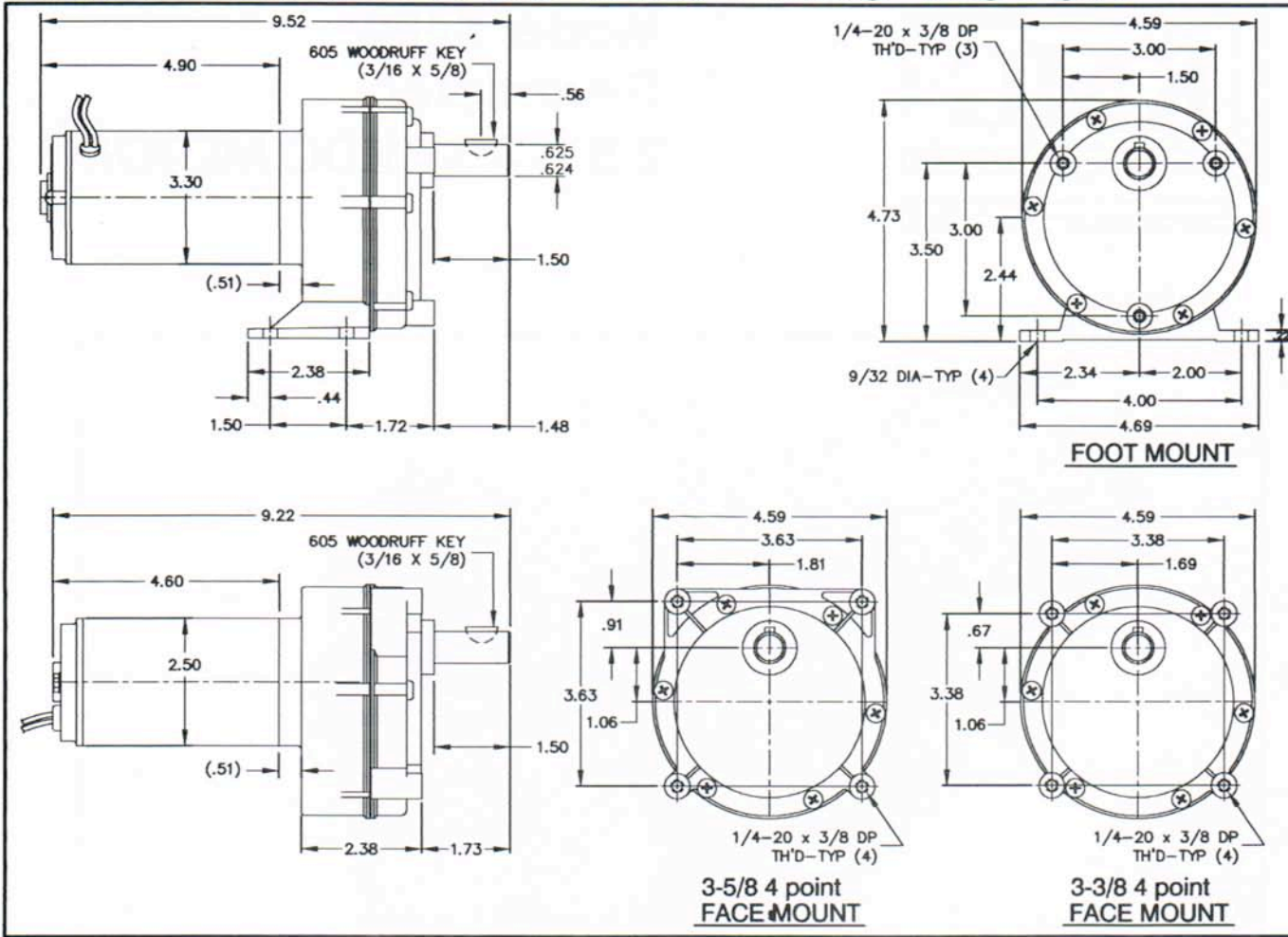
- Permanent magnet motor
- 12 VDC and 90 VDC
- Continuous duty motor
- Reversible rotation
- Eleven standard ratios
- Zinc diecast housings
- Acetal and steel gears
- Oil impregnated bronze bearings on gear shafts
- O-Ring seal on output shaft
- Permanently lubricated
- All position mount

Note: Painted finish is not standard

Options:

- Needle bearings
- Face mount (no feet)
- For other options call factory

Model K400 2.5 & 3.3 TENV PMDC MOTOR



Torque Chart (inch lbs)						
2.5" DIA PERMANENT MAGNET MOTOR						
RATIO	1/15 HP CON		1/15 HP INT		1/30 HP CON	
	FULL LOAD RPM	FULL LOAD TORQUE	FULL LOAD RPM	FULL LOAD TORQUE	FULL LOAD RPM	FULL LOAD TORQUE
61:1	54	56	49	56	54	28
93:1	36	86	32	86	36	43
101:1	32	94	30	94	32	47
148:1	22	124	20	124	22	62
226:1	15	190	13	190	15	95
290:1	11	242	10	242	11	121
441:1	7.5	350	6.8	350	7.5	185
581:1	5.7	350	5.2	350	5.7	221
885:1	3.8	350	3.4	350	3.8	337
1136:1	3.0	350	2.9	350	3.0	350
1731:1	2.0	350	2.0	350	2.0	350

(Output Torque is Theoretically Calculated and Gear Limited)

Torque Chart (inch lbs)		
3.3" DIA PERMANENT MAGNET MOTOR		
RATIO	1/8 HP CON	
	FULL LOAD RPM	FULL LOAD TORQUE
14:1	161	40
27:1	83	77
53:1	42	138
81:1	28	210
132:1	17	312
200:1	11	350
257:1	9	350
392:1	6	350
509:1	4	350
777:1	3	350
996:1	2	350
1518:1	1	350

(Output Torque is Theoretically Calculated and Gear Limited)

Overhung load capacity (1" from output boss) not to exceed 150 lbs.



KLAUBER MACHINE & GEAR CO.
 1101 GEARTECH PARKWAY
 PACIFIC, MO 63069
 PHONE (636) 257-3002 FAX (636) 257-3005