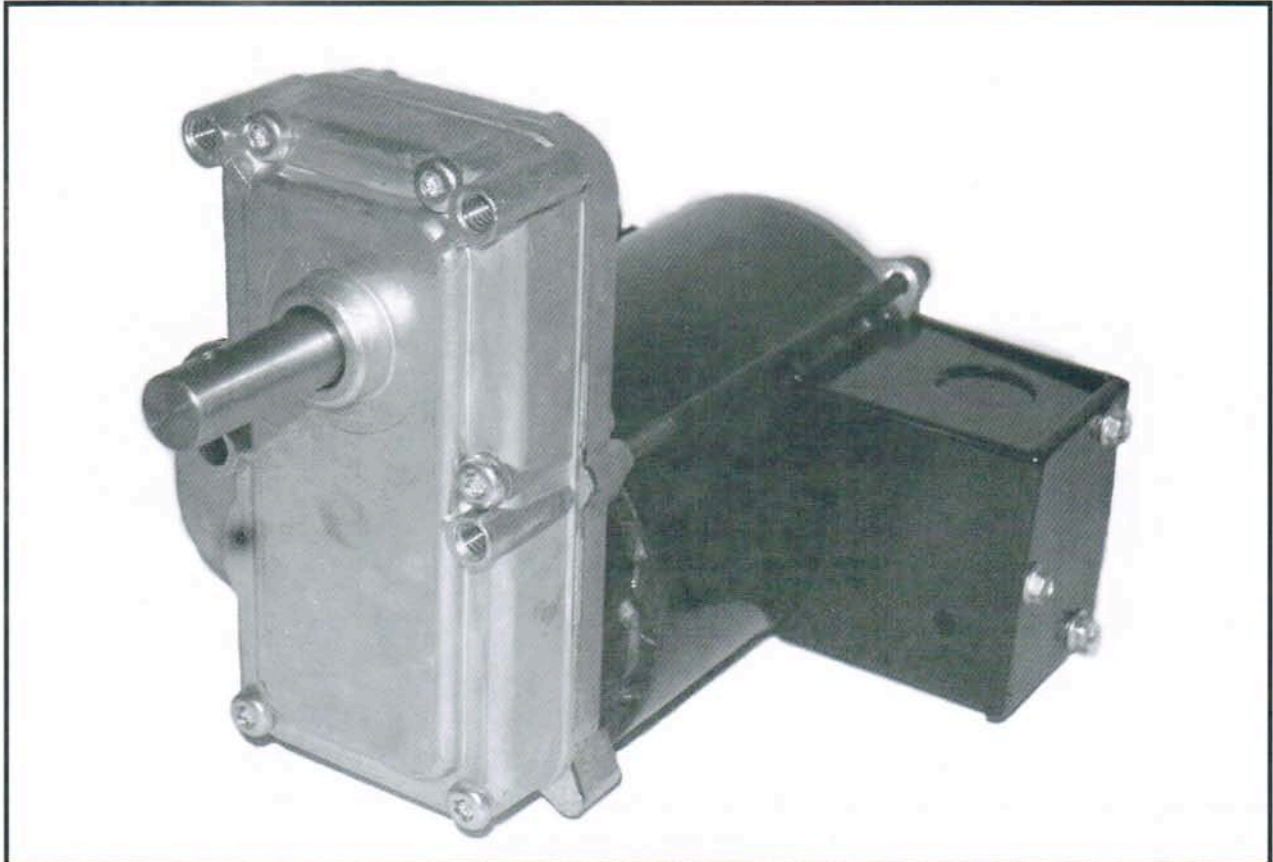


## Model K525 Gearmotor 3.3" PSC Motor



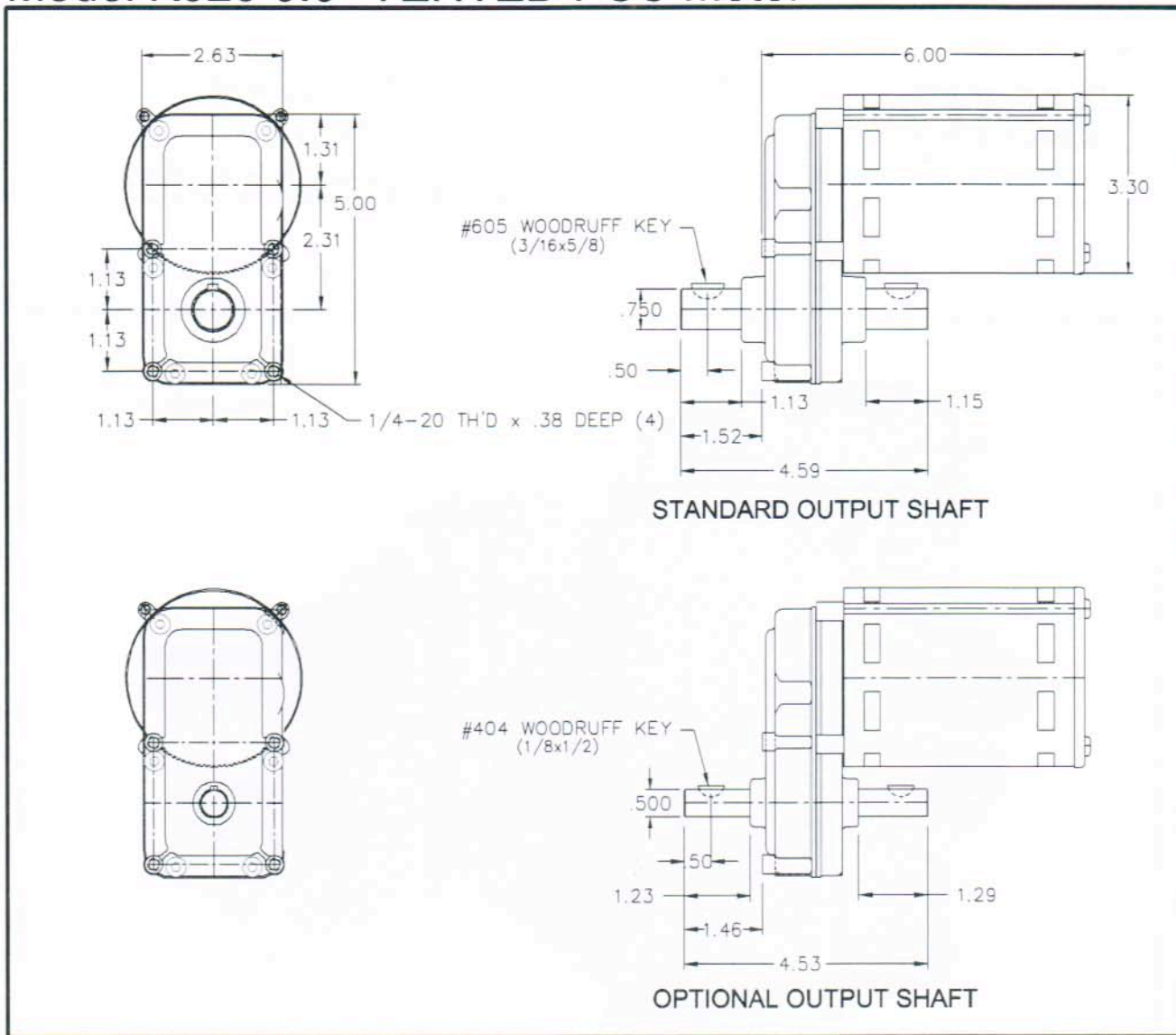
### Specifications:

- 1/10 hp 3.3" Permanent Split Capacitor motor
- 115/60 VAC input
- Open continuous duty motor
- Auto-reset thermal protection
- Ball bearings in motor
- Reversible rotation
- Zinc die-cast housing
- Seven standard gear ratios
- Precision helical gears in first reduction
- Needle bearings on gear shafts
- O-ring seal on output shaft
- Permanently lubricated
- All position mount

### Options:

- 230 VAC 50/60 Hz input
- Dual 115/230 VAC input
- Single extended output shaft
- Brake mounted on motor
- Consult factory for other options

# Model K525 3.3" VENTED PSC Motor



Torque Chart (inch lbs)		
1/10 HP 115 VAC /60 HZ 4-POLE PERMANENT SPLIT CAP.		
RATIO	FULL LOAD RPM	FULL LOAD TORQUE
30:1	52	95
39:1	40	115
61:1	25	150
116:1	13	150
165:1	9	150
195:1	8	150
251:1	6	150
367:1	4	150

Overhung load capacity (.75" from output boss) not to exceed 200 lbs.



**KLAUBER MACHINE & GEAR COMPANY**  
 1101 GEARTECH PARKWAY  
 PACIFIC, MO. 63069  
 PH: (636) 257-3002 FAX: (636) 257-3005  
[www.klaubergear.com](http://www.klaubergear.com)